

NXW1 Consumer Unit for Outdoor Application

1. General

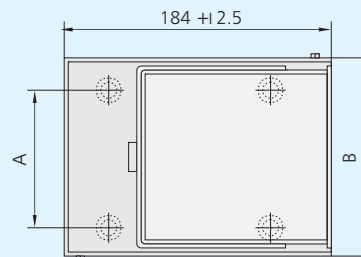
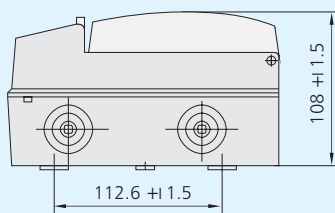
- 1.1 Electric ratings: up to 63A, 230V, AC50/60Hz;
- 1.2 No. of mounted units: 3, 5;
- 1.3 On-load current A: 63;
- 1.4 Allowable temperature-rise of enclosure: 40k;
- 1.5 Protection degree: IP65;
- 1.6 Standard: IEC/EN 60439-3

2. Features

- 2.1 Special designed with excellent enclosure capability; with high protection degree up to IP65, applicable for outdoor mounting.
- 2.2 The interiorly mounted MCBs are all in compliance with relative IEC standards, 9mm modularized electric components are applicable, as well;
- 2.3 On request, various circuit combinations can be assembled; and the mounting capacity of the product units can be taken to 3~ 5units
- 2.4 Convenient and reliable operation, having exposed handle, and all live parts to be mounted inside the wall box;
- 2.5 The consumer unit is designed with internal terminal blocks for connection of neutral line and protective grounding wire.
- 2.6 The enclosure of the unit is made of plastic material



3. Overall and Mounting Dimensions (mm)



| Model | A | B |
|--------|-----------|---------|
| NXW1-3 | 66.8±1.5 | 100±1.5 |
| NXW1-5 | 102.8±1.5 | 136±2.5 |

4. Ordering Information

| Model | Number of circuits | Order Code | |
|-------|--------------------|------------|--------|
| | | Standard | RoHS |
| NXW1 | 3 | 151201 | 971271 |
| NXW1 | 5 | 151202 | 971272 |